



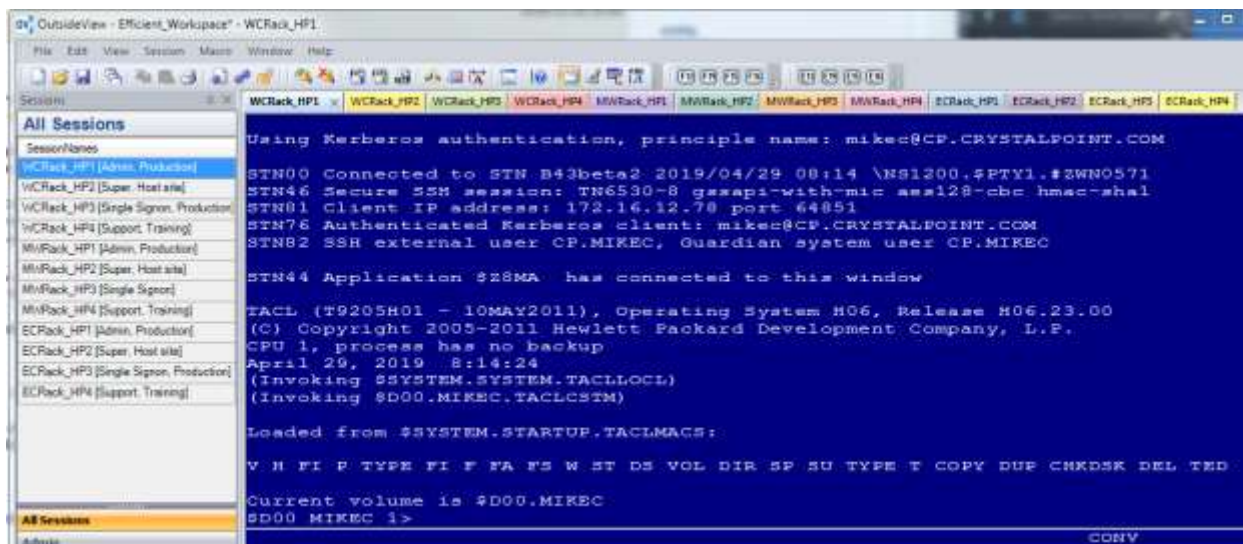
## How OutsideView 9.0 Enhances Workspace Efficiency

Workspaces with many sessions can be organized using various features within OutsideView 9.0 to simplify session management and usage. The features that will be covered in this topic are:

- Session tab organization
- Session bar organization
- Session filtering
- Session color coding
- Session Activation Control

### Session Tab Organization

OutsideView 9.0 uses the concept of multiple sub groups of sessions in a single workspace. Each subgroup can contain multiple sessions, oriented vertically or horizontally. As an example, 12 sessions were created and saved to a workspace. These sessions were created such that they are grouped by their session name prefix: WCRack, MWRack, and ECRack:

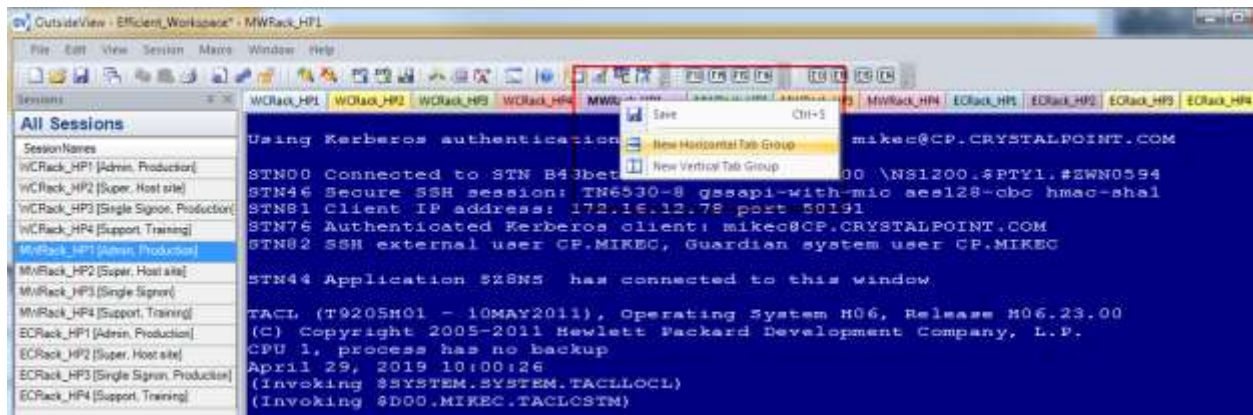


This workspace was then saved as Efficient\_Workspace. As can be seen, it's not easily visible to determine which sessions are in which grouping other than reading the session name! Now see the difference when these sessions are organized into session tab groups.

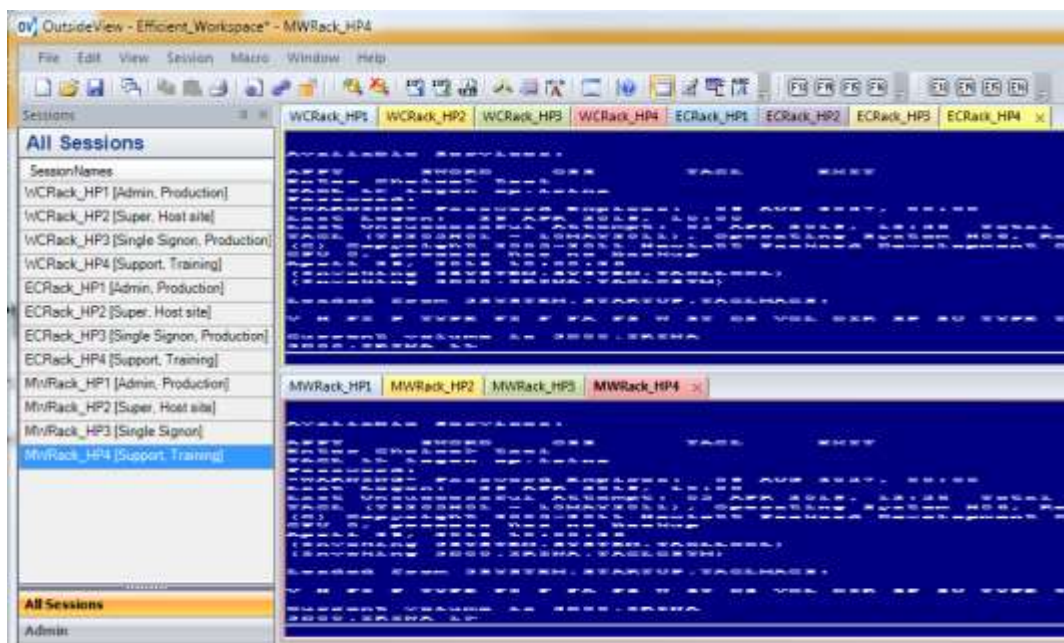
Creating tab groups is very easy within OV9.0. In the Window menu, double check that OV is configured for Tabbed Windows. If not then select it so that option is checked.



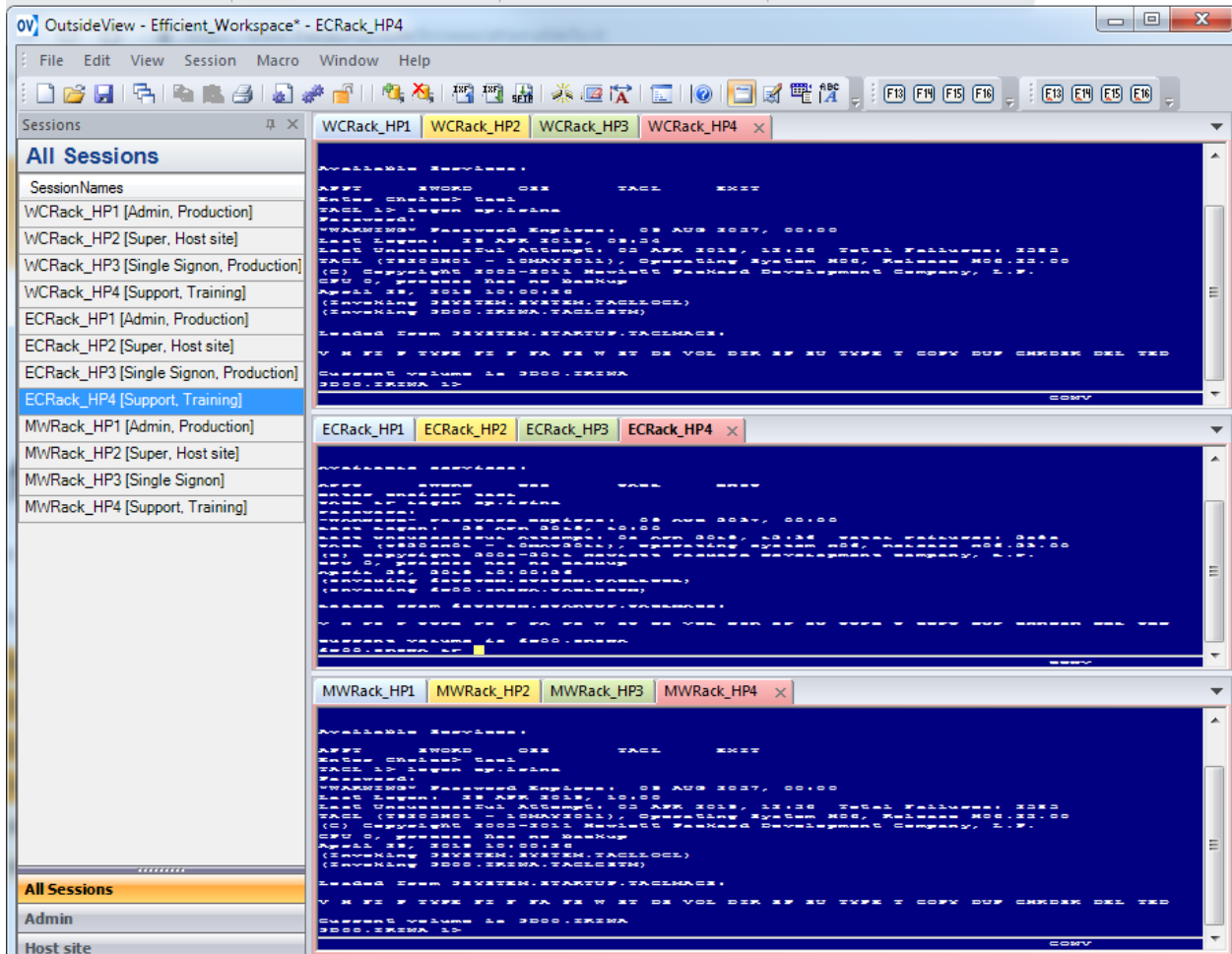
In the workspace, select a session to create a tab group. In this workspace example, we will create a new tab group for all sessions with name MWRack\_\*. Starting at MWRack\_HP1, select the tab and then right click mouse button and select New Horizontal Tab Group. Next select the other MWRack\_ labeled sessions then drag and drop them into the newly created horizontal tab group.



You should now see two tab groups:



Finally create the third session tab group for ECRack\_ sessions so that the workspace looks like the following image below:

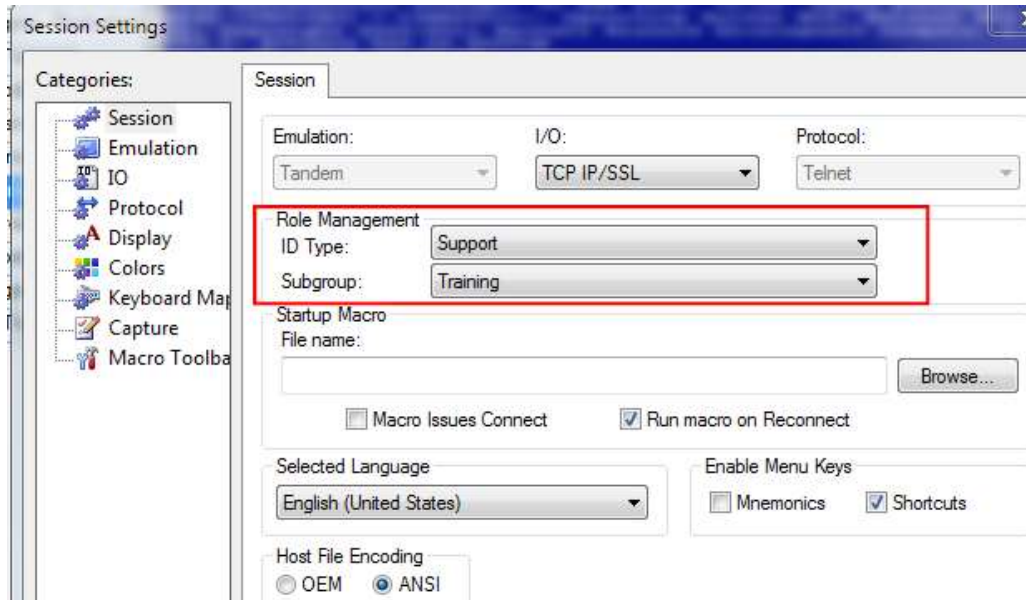


The three tab groups makes it easier to determine which sessions are logically grouped together!

## Session Bar Organization

Efficiency can also be gained by creating sessions that uses Outside View's Role Management. Role Management consists of ID Type and Subgroup.

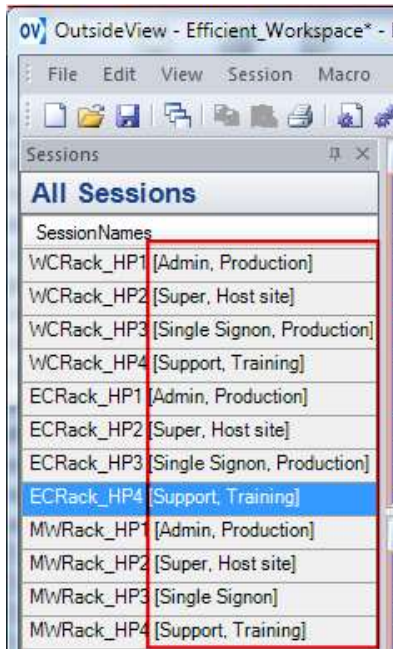
These options are configured in the Session Setting's Session tab:



ID Type is used by Identity Management to reduce redundant or repetitive logging in to the host through the day. By associating all session files using the same credentials with the same "ID Type" users will be prompted once for their credentials, and all subsequent session of the ID Type that are opened or reconnected will be logged in automatically.

Now in terms of Session Bar organization, the idea here is that sessions can be organized using ID Type and Subgroup. When users specify a ID Type and/or Subgroup they will see that the Session Bar displays the session name and includes the tag [ID Type, Subgroup]:

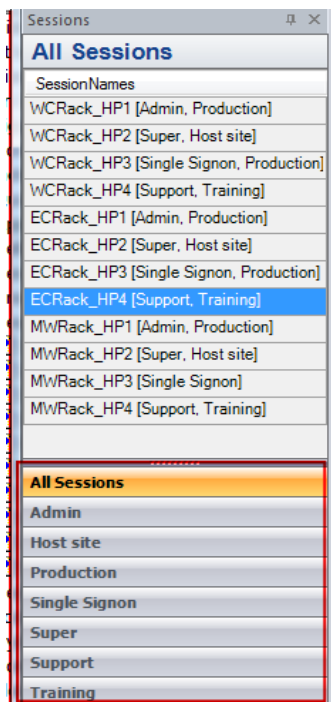




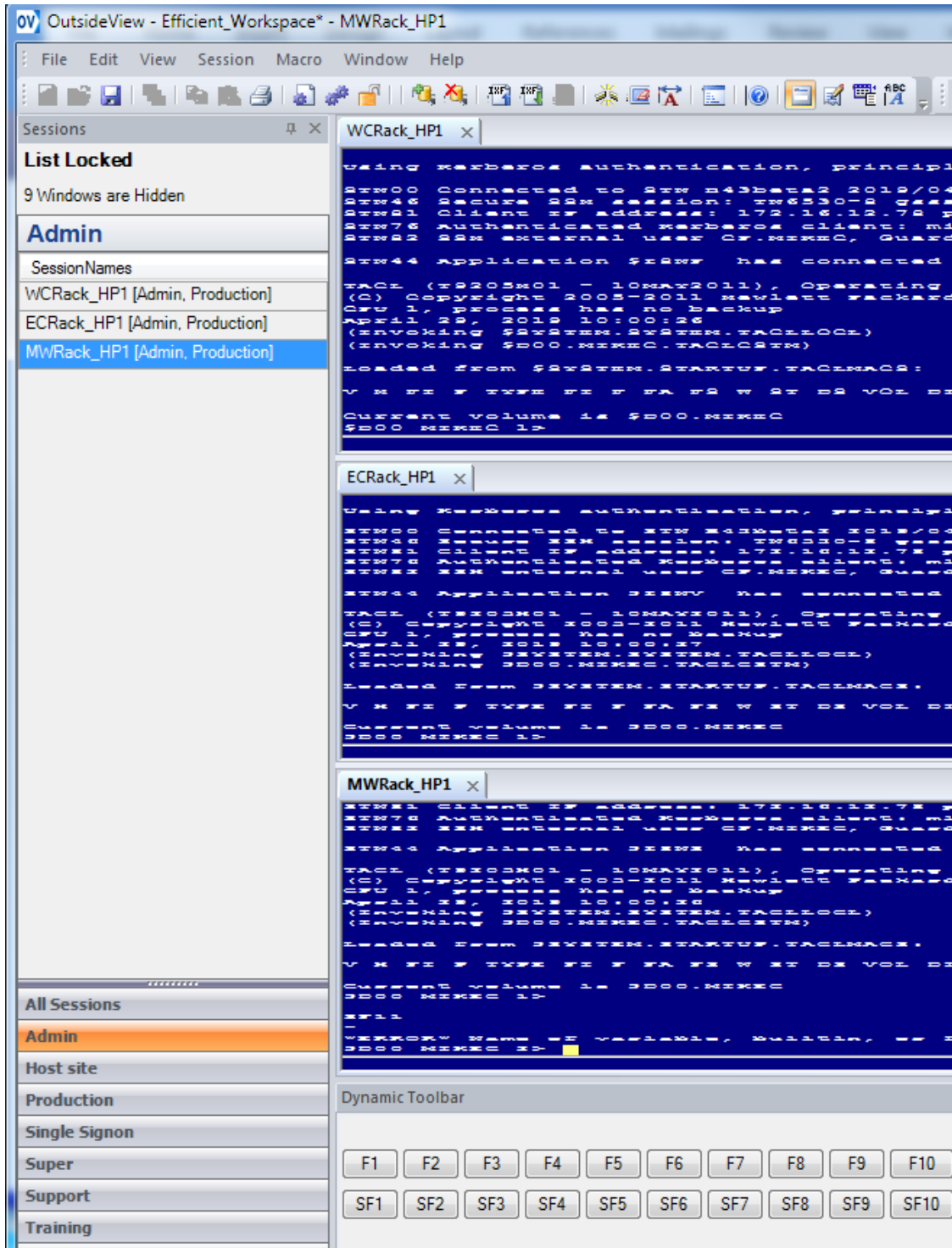
This is helpful in letting users be able to easily identify which sessions are configured for which role types. For example, it is now very easy to determine which session is logged in with the Super credential. There is no need to click through the individual session trying to find the session that is logged on as Super.

## Session Filtering

When sessions are configured to use Role Management, the Session Bar automatically gains the ability to provide session filtering for those configured sessions in the form of Filter buttons:



The filter buttons are dynamically created for each unique ID Type or Subgroup used in the Role Management for each session. Session filtering enable users a very elegant way to organize sessions in the Session Bar such that they can focus on the specific filtered sessions (Admin):



Only sessions that have the Admin ID Type configured will be displayed in the Session Bar and workspace. This is very useful in reducing clutter and letting users see only the sessions that they need to see and at the same time allow them to keep their numerous sessions in the same workspace!

## Session Color Coding

The Session Bar is now color-coded to help users identify from a glance by color which sessions are preloaded but not yet active, which session are active, and which sessions are disconnected:

All Sessions
SessionNames
WCRack_HP1 [Admin, Production]
WCRack_HP2 [Super, Host site]
WCRack_HP3 [Single Signon, Production]
WCRack_HP4 [Support, Training]
ECRack_HP1 [Admin, Production]
ECRack_HP2 [Super, Host site]
ECRack_HP3 [Single Signon, Production]
ECRack_HP4 [Support, Training]
MWRack_HP1 [Admin, Production]
MWRack_HP2 [Super, Host site]
MWRack_HP3 [Single Signon]
MWRack_HP4 [Support, Training]

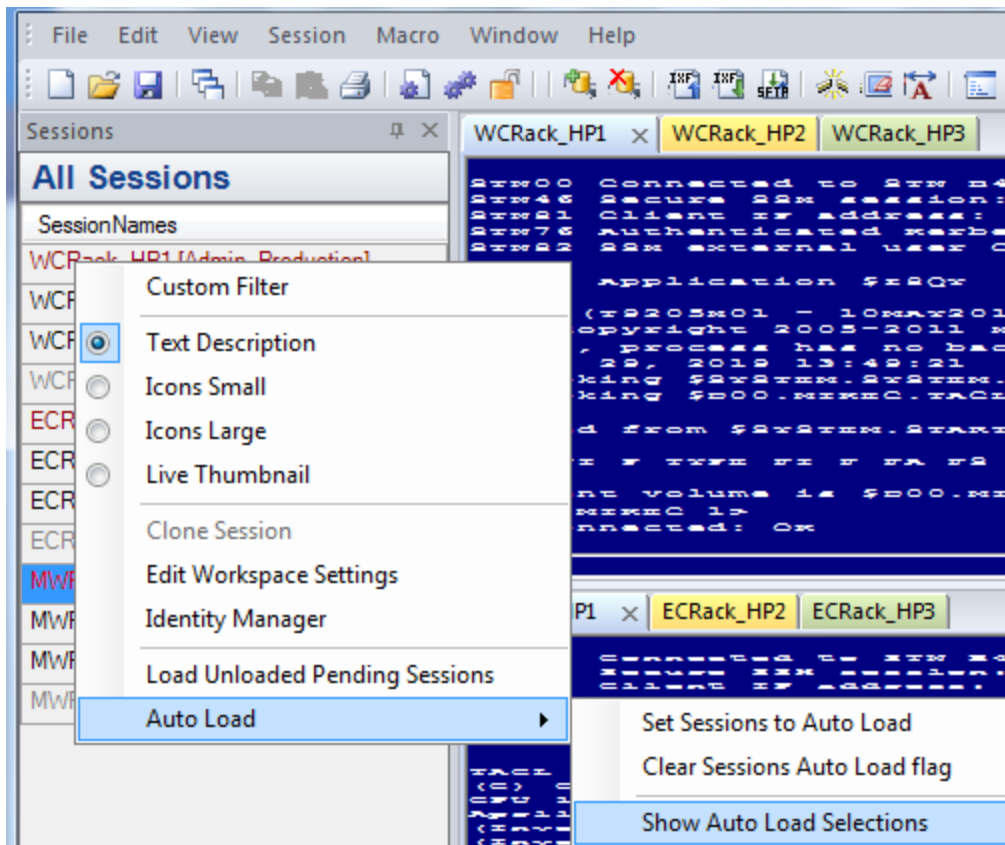
- Red color = Session is disconnected from host
- Black color = Session is connected to Host
- Grey color = Session is not loaded

The color-coded session is a simple feature that lets users identify which sessions are disconnected and not loaded.

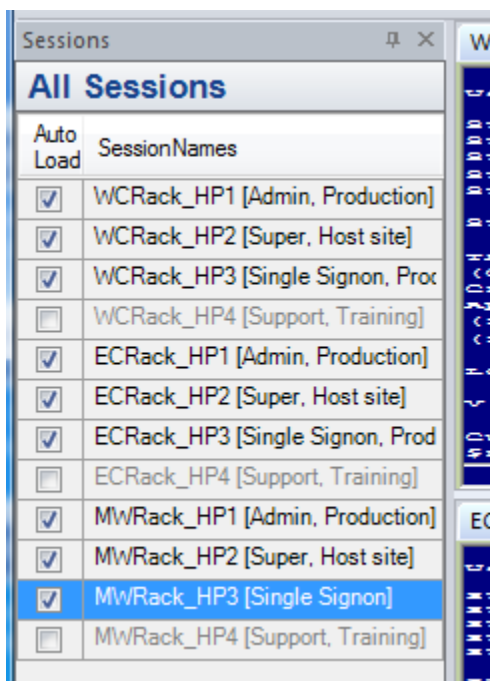
## Session Activation Control

Users are now able to select which sessions in a workspace to load and start automatically and which sessions are listed but not active until selected (delay load). This gives users the flexibility to focus on their primary sessions while having other sessions listed for immediate access but held in reserve until needed.

Session Activation Control is configured with the right click mouse button when cursor is hovering over the Session Bar to bring up the pop um menu for Autoload:



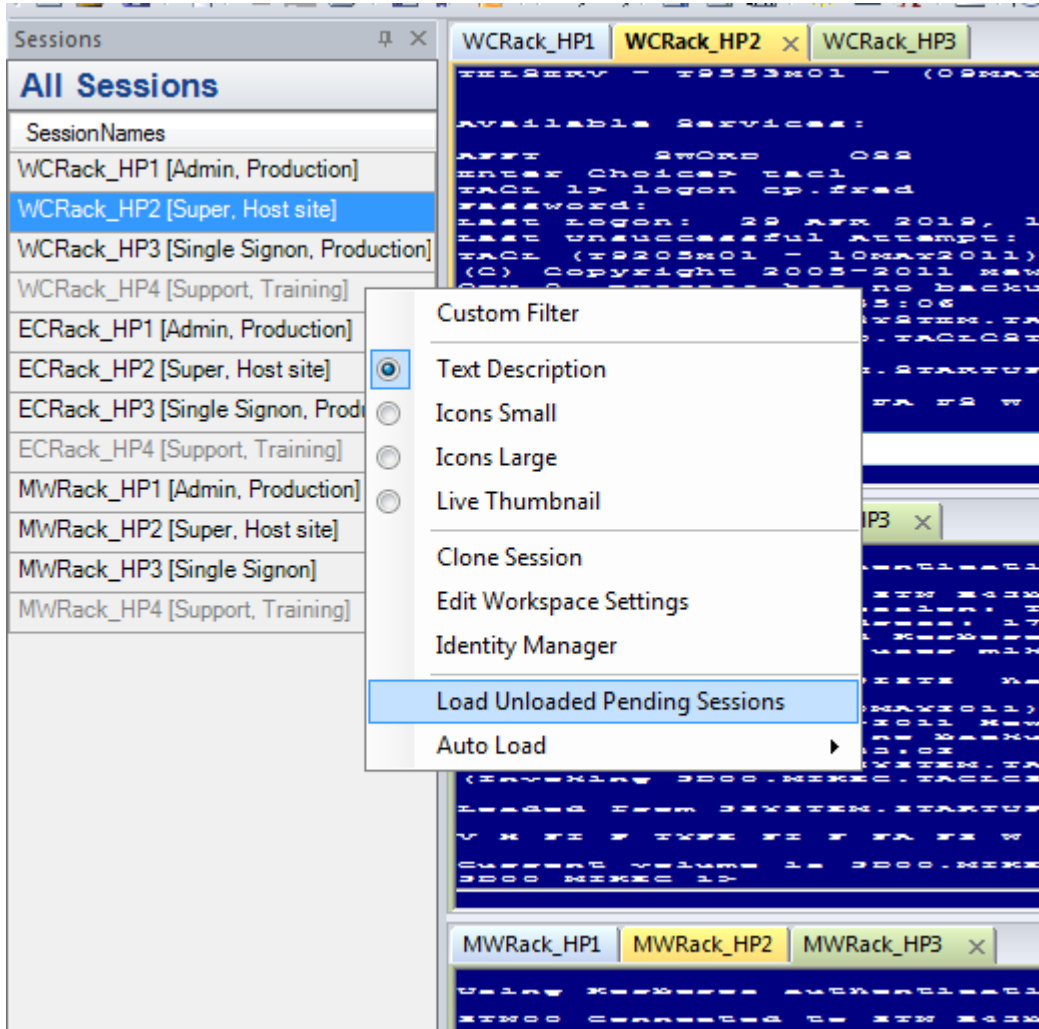
Selecting the option Show Auto Load Selections will display a Auto Load column in the Session Bar:





Checkmark the sessions for Auto Load when a workspace is loaded and uncheck the sessions to be delayed load. These sessions will get loaded when the user clicks on the grey colored session in the Session Bar.

The advantage to using Session Activation Control really comes into play for workspaces that have a lot of sessions. Instead of having to wait for all the sessions to finish loading in the workspace before being able to start using a session; users can load a part of the sessions in a workspace and then delay load the other sessions. They can either click on the grey colored session to individually load each session or use the mouse menu option to load all of them at once:



## Conclusion

When creating a workspace with lots of sessions remember to use these features:

- Session tab organization
- Session bar organization
- Session filtering
- Session color coding
- Session Activation Control

They will help make managing workspace and sessions easier and more efficient.

**For more information about OutsideView 9.0, contact: [sales@crystalpoint.com](mailto:sales@crystalpoint.com)**