

A Useful Feature You May Not Know About

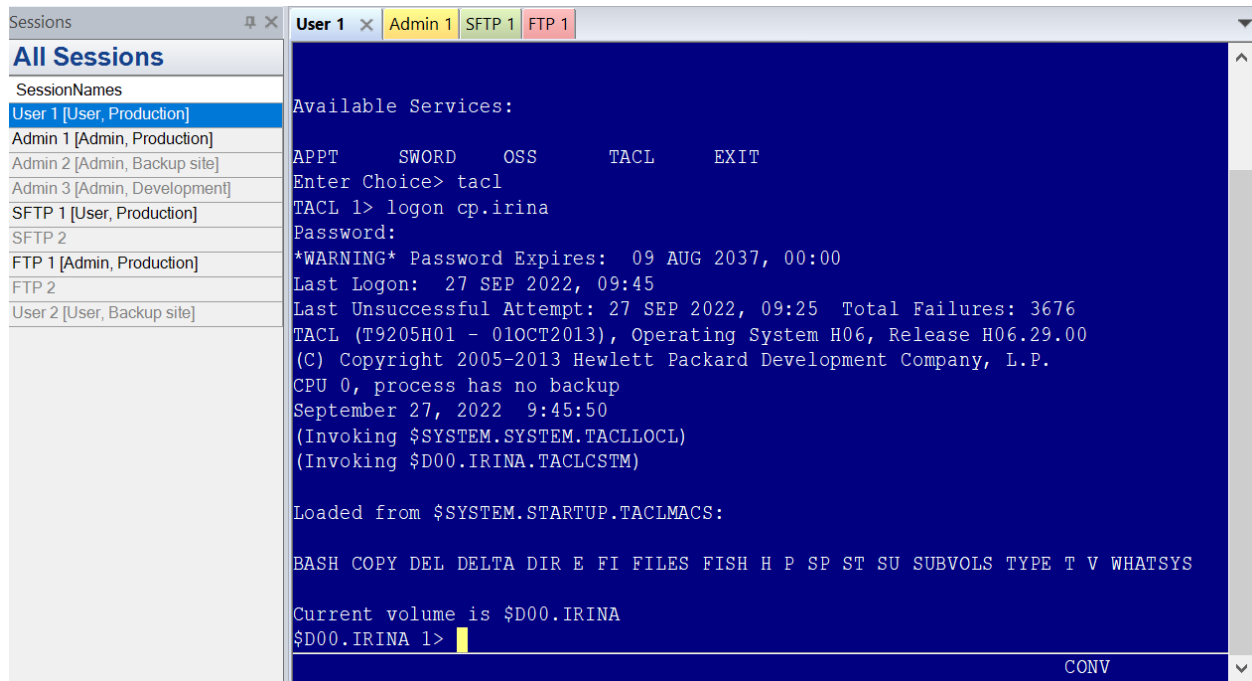
#3 Session Activation Control

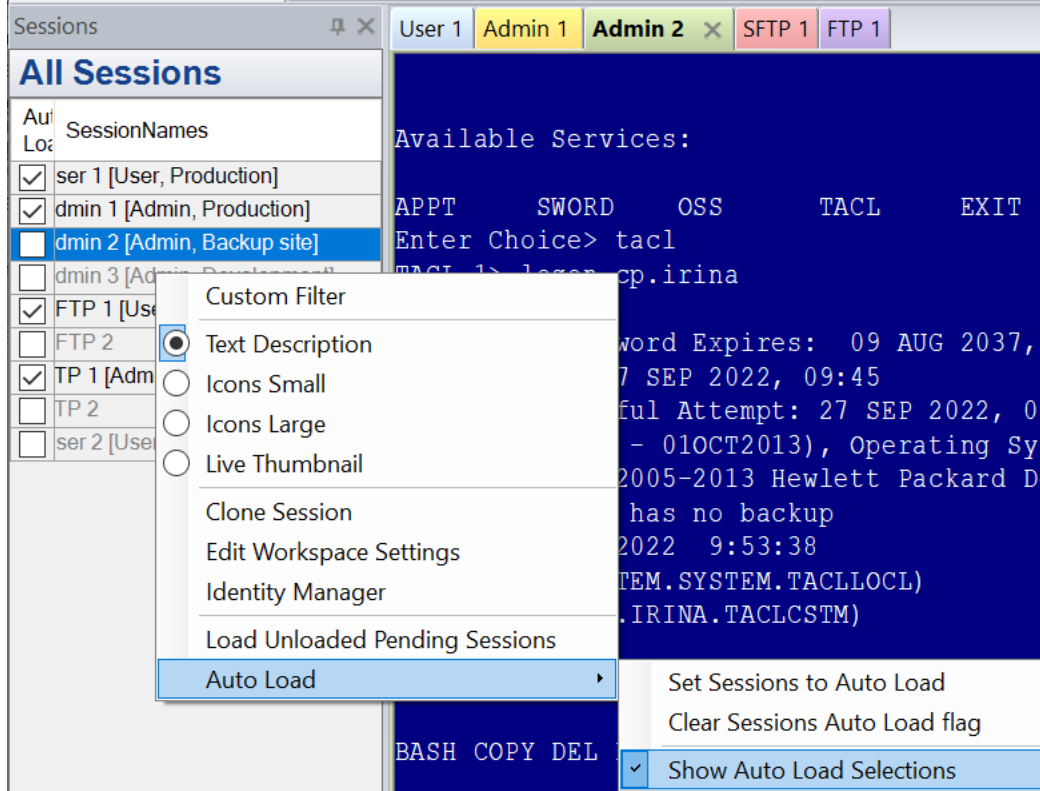
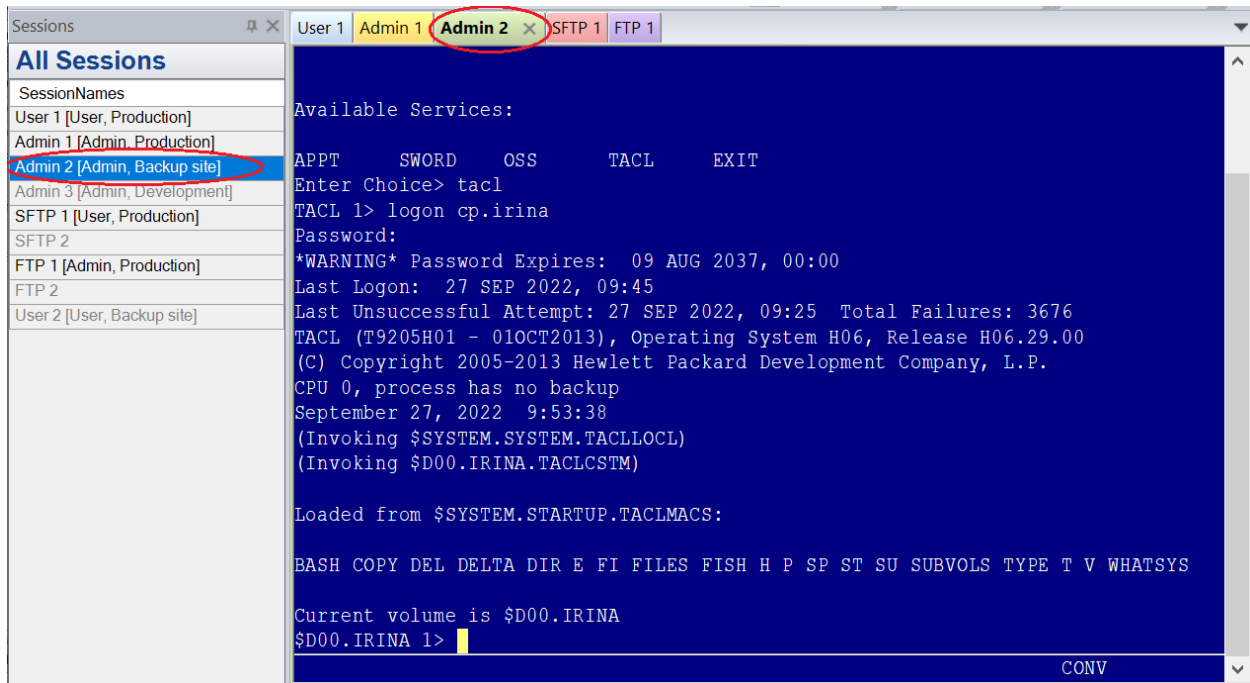
Workspaces can have sessions that are not loaded until selected by the user (Screenshot 1)
In the first image, the grey-out sessions are part of the workspace but are not connected to the host.

To connect the session to the host, click the session in the Session Bar. The corresponding session tab will appear on the screen (Screenshot 2).

To configure Auto Load Selection, right-click on the Session Bar and select the Show Auto Load Selection option from the Auto Load menu (Screenshot 3).

Remember to resave the Workspace.





Need help configuring
OutsideView? Contact: support@crystalpoint.com? Contact: support@crystalpoint.com