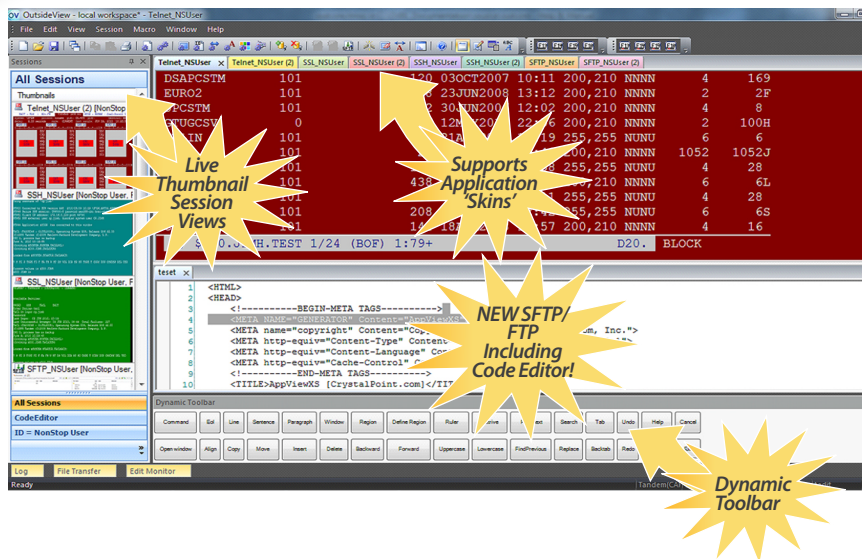


OutsideView® 8.1



✓ MODERNIZED LOOK AND FEEL.

OutsideView offers a modernized look and feel, giving users the ability to select an OutsideView 'skin' to suit their preferences. Users can now select between tabbed and legacy windowed layouts for their workspaces. Live Thumbnail views of active sessions now available in the Session Panel.

✓ UNIVERSAL EDITOR.

OutsideView now offers a syntax-aware, color-coded editor for use by programmers.

- ✓ **IDENTITY CACHING.** OutsideView supports (optional) designation of session 'type,' and encryption of user credentials into RAM. Together, these enable automatic reuse of those credentials in all sessions of the same type. This is not Kerberos single signon capability which we also support - but is functionally similar. Unlike Kerberos, which is restricted to SSH session usage, Identity Caching spans all session types (Telnet, SSL, or SSH).
- ✓ **CLONE SESSION.** Have you ever needed another instance of your host sessions? OutsideView lets you duplicate a session with just a few clicks.
- ✓ **CONTEXT-SENSITIVE TOOLBARS.** Provide labels for function keys that reflect their use in your current context.
- ✓ **.NET API.** You now have the choice of our proprietary Visual Comm Basic macro language, or use of any .NET compatible language to extend your control over your NonStop host sessions.
- ✓ **ENHANCED FAILOVER CAPABILITIES.** Now configure host session file with automatic alternate host:port locations. Also, configure the Enterprise resource 'hub' with automatic alternate locations.
- ✓ **HOST-TO-HOST TRANSFERS.** Move files laterally between active File Transfer sessions.
- ✓ **MULTIPLE HOST UPLOADS.** It's now easier to distribute files to multiple systems; merely open multiple file transfer sessions, and you may send a file to any or all such connections in a single process.
- ✓ **ENHANCED LOGGING.** A detailed, auto-hide log extends your awareness of session activities, while added logic will automatically resolve any naming conflicts when opening multiple copies of logged sessions.

OUTSIDEVIEW OVERVIEW

OutsideView is the most feature-rich NonStop terminal emulation product. Visit www.crystalpoint.com OutsideView product page to see the companion document, "Compare OutsideView Versions" for a more comprehensive list of our features and functions.

General Features:

- Out performs our nearest competition nearly 2-to-1 in conversation mode, so you can view logs, files faster.
- Ground-breaking seamless switching between 6530 and OSS within sessions.
- Multiple emulations in one package price; 6530, VT320, 3270(E), 5250, Wyse.
- Full range of In-Transit security capabilities, including SSH, SSL, SFTP, FTPS-TLS, and Kerberos single signon support.
- Enterprise implementation mode provides unique and efficient central oversight of user configuration files and permissions, including real-time change distribution, and dynamic profile membership.
- Unique concurrent licensing 'pools' within our Enterprise architecture allow unlimited end-user installations, as well as Citrix and Windows Terminal Server support.
- User Interface tools include Dynamic Input Assistance™ (command editing, command history, command syntax assistance, spelling checker).
- "Find" in display buffer.
- Download-and-edit one-step operations, with imbedded syntax-aware, color coded editor.
- For larger OutsideView Enterprise installations, optional Microsoft SQL-based licensing support provides enhanced reliability and performance across large distributed networks.

OUTSIDEVIEW 8.1 SPECIFICATIONS

Operating Environments	Emulations	Connectivity Methods	File Transfer Methods	Workstation Requirements
Windows 8* Windows 7* Windows Server 2012* Windows Vista* Windows Server 2008*	Tandem 6530 TN3270/3270E TN5250 OSS (VT320/220) Wyse50	SSHv2 SSL 3.0/TLS 1.0 TCP/IP IPX/SPX MultiLAN Asynchronous	SSH-secured SFTP SSL-secured FTP IXF FTP	TCP/IP IPX/SPX MultiLAN or serial connectivity 250 MB disk space Optional Enterprise SQL Licensing requires Microsoft SQL Server/Server Express
* with .Net 3.5sp1 or higher				

Please contact our sales group at sales@crystalpoint.com or 800-982-0628 (+01-425-487-3656 for international customers) to discuss your upgrade or purchase options. If your OutsideView 8.0 is covered by our Star Support and Maintenance Agreement, you are entitled to this Feature Release at no cost.